



For Use in CCO Written Examinations

LOAD CHART MANUAL

LIFT DIRECTOR—TOWER CRANES

These charts have been adapted from the original manufacturer's charts for use in CCO Written Examinations.

This supplement is not to be used for any other purpose.

Copyright 2013–2014 National Commission for the Certification of Crane Operators (NCCCO). All rights reserved. This document may not be reproduced in whole or in part without the express written permission of the manufacturer and the consent of NCCCO.

HOLD HARMLESS/RELEASE AGREEMENT

The user of this publication for and in consideration of the assistance, cooperation, and information provided by the National Commission for the Certification of Crane Operators (NCCCO) in this publication, *Tower Cranes Load Chart Manual*, the receipt of which is acknowledged, does hereby and for all future time release and hold harmless from any liability, and forever discharge for itself, its administrators and assigns the said NCCCO from all and any manner of action or demands whatsoever in law, in admiralty, or in equity, which against NCCCO anyone ever had, now have, or which shall later be claimed. This Agreement relates specifically to any cause of action arising out of the publication, information provided, subsequent conduct, and any use of the information provided in this publication and related uses or demonstrations of skills, methods, and techniques cited in the publication. This mutually beneficial release and hold-harmless agreement may not be changed orally and exists in perpetuity. This publication is issued solely as a public service to improve the lifting industry and promote public safety.

NO WARRANTY

Information and materials provided in this *Tower Cranes Load Chart Manual* are provided “as is” without warranty of any kind, either express or implied, including without limitation warranties of merchantability, fitness for a particular purpose, and non-infringement. NCCCO specifically does not make any warranties or representations as to the accuracy or completeness of any such information and materials. Under no circumstances shall NCCCO be liable for any loss, damage, liability, or expense incurred or suffered which is claimed to have resulted from use of this publication, including without limitation, any fault, error, omission, interruption, or delay with respect thereto. Use of this publication is at user’s sole risk. Under no circumstances, including, but not limited to, negligence, shall NCCCO be liable for any direct, indirect, incidental, special, or consequential damages, even if NCCCO has been advised of the possibility of such damages.

Copyright 2013–2014 by the National Commission for the Certification of Crane Operators. All rights reserved. No part of this book may be reproduced or transmitted in any form or by any means, electronic or mechanical, including photocopying, recording, or by any information storage and retrieval system, without prior written permission from the publisher. For information, contact the publisher, the National Commission for the Certification of Crane Operators, at info@nccco.org.

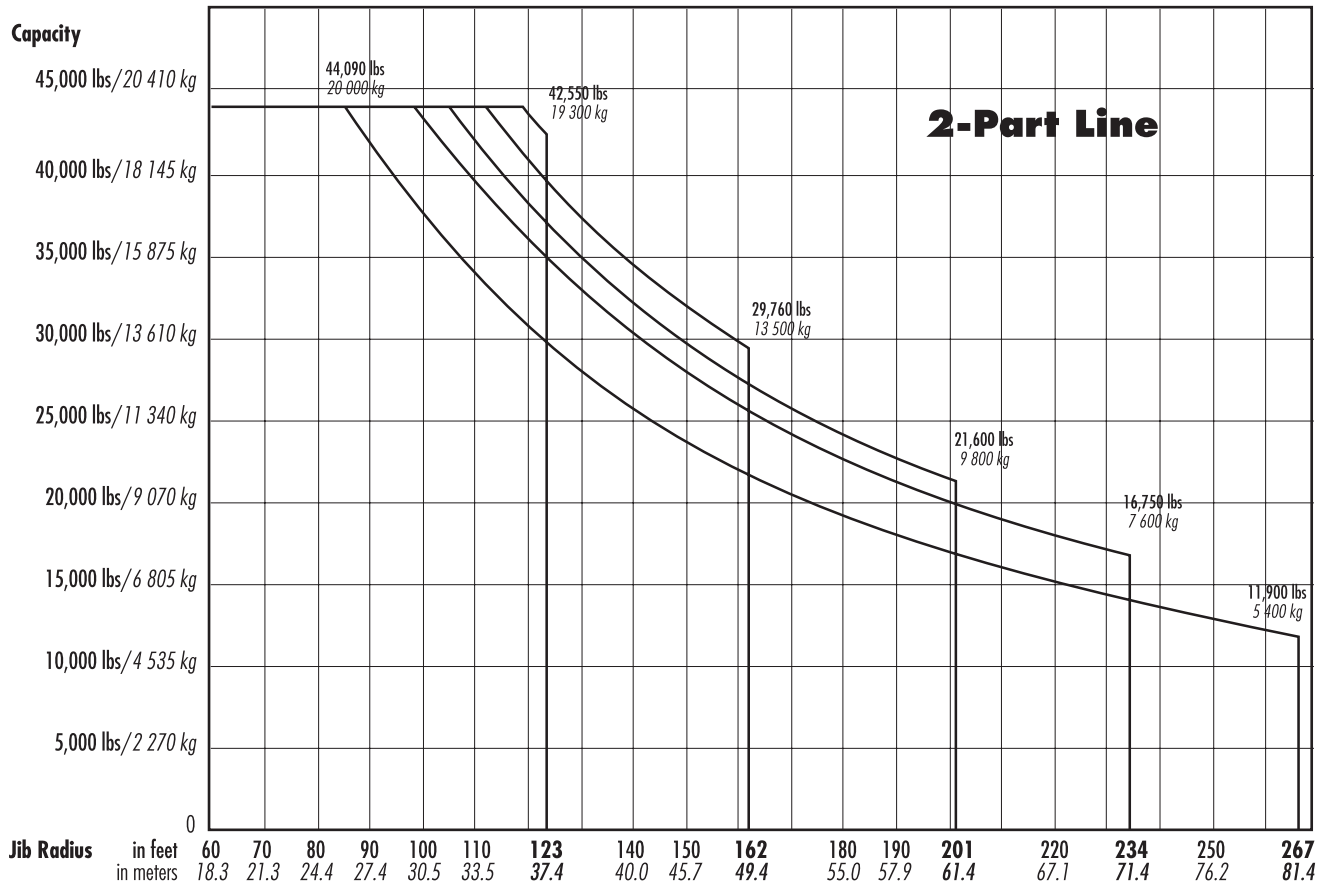
Hammerhead Tower Crane

Chart D

Radius and capacities

2-Part Line

Hook Radius	Maximum Capacity – Radius	ft m	10 3.1	16 5.0	33 10.0	49 15.0	66 20.0	82 25.0	98 30.0	123 37.4	131 40.0	148 45.0	162 49.4	180 55.0	201 61.4	213 65.0	234 71.4	246 75.0	267 81.4
267 ft 81.4m	44,090 lbs – 85 ft 20 000 kg – 25.9m	lbs kg	44,090 20 000	44,090 20 000	44,090 20 000	44,090 20 000	44,090 20 000	44,090 20 000	37,920 17 200	29,960 13 590	27,845 12 630	24,425 11 080	21,960 9 960	19,400 8 800	16,995 7 710	15,875 7 200	14,110 6 400	13,230 6 010	11,900 5 400
234 ft 71.4m	44,090 lbs – 98 ft 20 000 kg – 30.0m	lbs kg	44,090 20 000	44,090 20 000	44,090 20 000	44,090 20 000	44,090 20 000	44,090 20 000	44,090 20 000	34,900 15 830	32,495 14 740	28,570 12 960	25,750 11 680	22,815 10 350	20,060 9 100	18,740 8 510	16,750 7 600		
201 ft 61.4m	44,090 lbs – 105 ft 20 000 kg – 32.0m	lbs kg	44,090 20 000	44,090 20 000	44,090 20 000	44,090 20 000	44,090 20 000	44,090 20 000	44,090 20 000	37,390 16 960	34,820 15 795	30,665 13 910	27,645 12 540	24,515 11 120	21,600 9 800				
162 ft 49.4m	44,090 lbs – 112 ft 20 000 kg – 34.2m	lbs kg	44,090 20 000	44,090 20 000	44,090 20 000	44,090 20 000	44,090 20 000	44,090 20 000	44,090 20 000	40,145 18 210	37,410 16 970	32,980 14 960	29,760 13 500						
123 ft 37.4m	44,090 lbs – 119 ft 20 000 kg – 36.2m	lbs kg	44,090 20 000	44,090 20 000	44,090 20 000	44,090 20 000	44,090 20 000	44,090 20 000	44,090 20 000	42,550 19 300									



Luffing Boom Tower Crane

Chart F-1

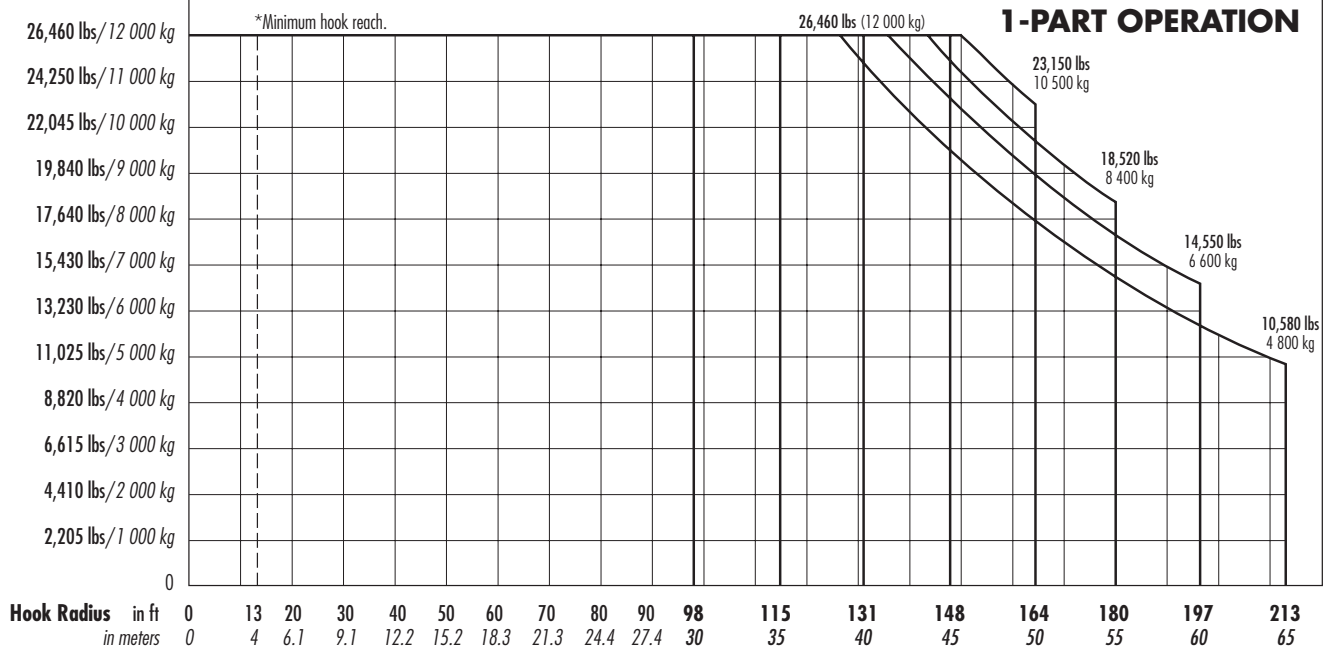
Radius and Capacities

Hook Reach	Maximum Capacity – Radius	ft m	13* 4*	66 20	98 30	107 32.5	115 35	123 37.5	131 40	139 42.5	148 45	156 47.5	164 50	172 52.5	180 55	189 57.5	197 60	205 62.5	213 65	
213 ft 65m	26,460 lbs – 127 ft 12 000 kg – 38.8m	lbs kg	26,460 12 000	26,460 12 000	26,460 12 000	26,460 12 000	26,460 12 000	26,460 12 000	25,245 11 450	22,155 10 410	20,945 9 500	19,160 8 690	17,550 7 960	16,115 7 310	14,795 6 710	13,625 6 180	12,520 5 680	11,530 5 230	10,580 4 800	
197 ft 60m	26,460 lbs – 136 ft 12 000 kg – 41.4m	lbs kg	26,460 12 000	26,460 12 000	26,460 12 000	26,460 12 000	26,460 12 000	26,460 12 000	26,460 12 000	24,440 11 540	23,345 10 590	21,495 9 750	19,820 8 990	18,320 8 310	16,955 7 690	15,720 7 130	14,550 6 600			
180 ft 55m	26,460 lbs – 144 ft 12 000 kg – 43.8m	lbs kg	26,460 12 000	26,460 12 000	26,460 12 000	26,460 12 000	26,460 12 000	26,460 12 000	26,460 12 000	26,460 12 000	25,395 11 520	23,415 10 620	21,625 9 810	20,020 9 080	18,520 8 400					
164 ft 50m	26,460 lbs – 150 ft 12 000 kg – 45.8m	lbs kg	26,460 12 000	26,460 12 000	26,460 12 000	26,460 12 000	26,460 12 000	26,460 12 000	26,460 12 000	26,460 12 000	26,460 12 000	26,460 12 000	25,065 11 370	23,150 10 500						
148 ft 45m	26,460 lbs – 148 ft 12 000 kg – 45m	lbs kg	26,460 12 000	26,460 12 000	26,460 12 000	26,460 12 000	26,460 12 000	26,460 12 000	26,460 12 000	26,460 12 000	26,460 12 000	26,460 12 000								
131 ft 40m	26,460 lbs – 131 ft 12 000 kg – 40m	lbs kg	26,460 12 000	26,460 12 000	26,460 12 000	26,460 12 000	26,460 12 000	26,460 12 000	26,460 12 000	26,460 12 000										
115 ft 35m	26,460 lbs – 115 ft 12 000 kg – 35m	lbs kg	26,460 12 000	26,460 12 000	26,460 12 000	26,460 12 000	26,460 12 000													
98 ft 30m	26,460 lbs – 98 ft 12 000 kg – 30m	lbs kg	26,460 12 000	26,460 12 000	26,460 12 000															



1-PART OPERATION

Capacity



Luffing Boom Tower Crane

Chart F-2

Radius and Capacities

Boom Length	Hook Reach	Maximum Capacity – Radius	ft m	13* 4*	82 25	90 27.5	97 29.4	107 32.5	113 34.4	123 37.5	129 39.4	139 42.5	146 44.4	156 47.5	162 49.4	172 52.5	179 54.4	189 57.5	195 59.4	
197 ft 60m	195 ft 59.4m	52,910 lbs – 71 ft 24 000 kg – 21.6m	lbs kg	52,910 24 000	43,650 19 800	38,490 17 460	34,195 15 510	30,690 13 920	27,645 12 540	25,090 11 380	22,860 10 370	20,920 9 490	19,180 8 700	17,635 8 000	16,270 7 380	15,035 6 820	13,890 6 300	12,850 5 830	12,125 5 500	
180 ft	179 ft 55m	52,910 lbs – 75 ft 24 000 kg – 23m	lbs kg	52,910 24 000	47,530 21 560	42,020 19 060	37,480 17 000	33,730 15 300	30,510 13 840	27,780 12 600	25,400 11 520	23,325 10 580	21,495 9 750	19,840 9 000	18,365 8 330	17,040 7 730	16,095 7 300			
164 ft	162 ft 50m	52,910 lbs – 80 ft 24 000 kg – 24.3m	lbs kg	52,910 24 000	51,060 23 160	45,280 20 540	40,500 18 370	36,550 16 580	33,200 15 060	30,335 13 760	27,820 12 620	25,640 11 630	23,680 10 740	21,935 9 950	20,725 9 400					
148 ft	146 ft 45m	52,910 lbs – 84 ft 24 000 kg – 25.5m	lbs kg	52,910 24 000	52,910 24 000	48,125 21 830	43,055 19 530	38,870 17 630	35,295 16 010	32,230 14 620	29,565 13 410	27,205 12 340	25,575 11 600							
131 ft	129 ft 40m	52,910 lbs – 86 ft 24 000 kg – 26.1m	lbs kg	52,910 24 000	52,910 24 000	49,580 22 490	44,400 20 140	40,100 18 190	36,420 16 520	33,270 15 090	31,085 14 100									
115 ft	113 ft 35m	52,910 lbs – 88 ft 24 000 kg – 26.7m	lbs kg	52,910 24 000	52,910 24 000	50,990 23 130	45,660 20 710	41,160 18 670	38,140 17 300											
98 ft 30m	97 ft 29.4m	52,910 lbs – 89 ft 24 000 kg – 27.2m	lbs kg	52,910 24 000	52,910 24 000	51,985 23 580	48,060 21 800													



2-PART OPERATION

*Minimum hook reach.

Capacity

